

# Frequency Components App Instructions

## General Features

The Frequency Components APP controls all operating functions required to run the FC-5. The APP is installed on the FC-5's internal computer and is visible on the touch screen. The computer runs on a Linux operating system.

Researchers operate the APP via the touch screen. Other computer functions are performed using a standard keyboard and mouse attached to the USB ports on the side of the Machine.

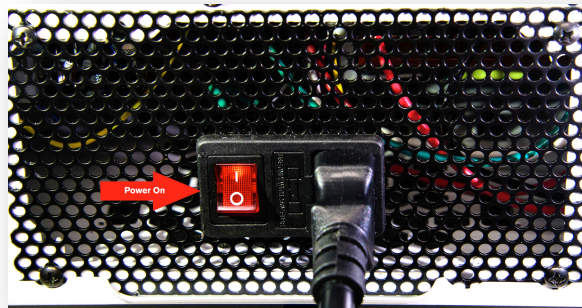
Researchers create Frequency Programs for their Machine in their Researcher's Account on the Frequency Components website. The Machine is WIFI equipped for access to the Internet and to the Researchers Account. From there, Researcher's can download their Frequency Programs to the Machine.

Each Machine has a unique serial number visible on the APP, in the Researcher's Account on the website, and on a label on the bottom of the Machine. Frequency Programs will only run on the Machine for which it was created. Frequency Programs will not run on other Machines.

## Machine Controls

### Power Switch

- The Power Switch controls power to the Machine. Turning it off at any time will turn the Machine off.
- **As with any computer, use the computer controls to turn off the computer. This allows the computer to shut down in an orderly manner.**
- Leave the Switch on at all times if the Machine's power cord is attached to the surge protector.



**(Figure 1)**

## Machine Controls

- The Unit Power Button turns on the internal computer and opens the Frequency Components App. The blue light around the button remains on. The button is disabled once it is on. (See Turning Off the Unit below for instructions on how to end the session.)

(Figure 2)



## Accessing The Computer's Home Screen

### Mouse & Keyboard

- The Frequency Components APP is the default screen for the Machine. Whenever you turn on the Unit Power, the APP will automatically load.
- Connect the mouse & keyboard to the USB ports on the side of the machine.
- Press the Exit button on the Frequency Components APP. If you have been running a Frequency Program, the computer's Home screen will open after the cool down period.

(Figure 3)



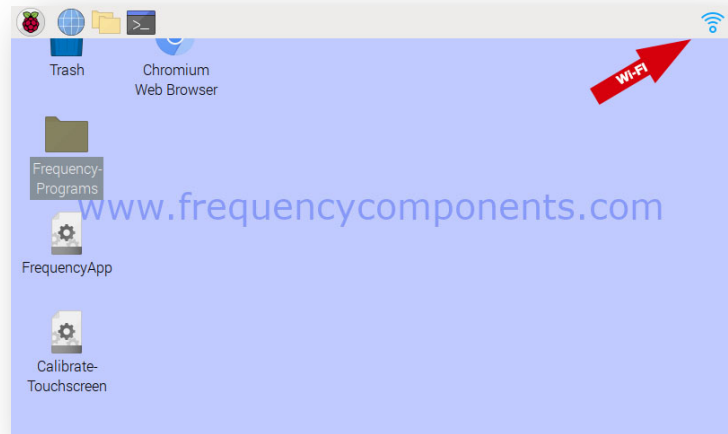


## Connecting the Machine to Wi-Fi

### Open Wi-Fi

- Open the computer's Home screen.
- Move the mouse to the top right corner of the screen.
- Click on the Wi-Fi button on the top right.
- Choose the Wi-Fi account and login.

(Figure 4)



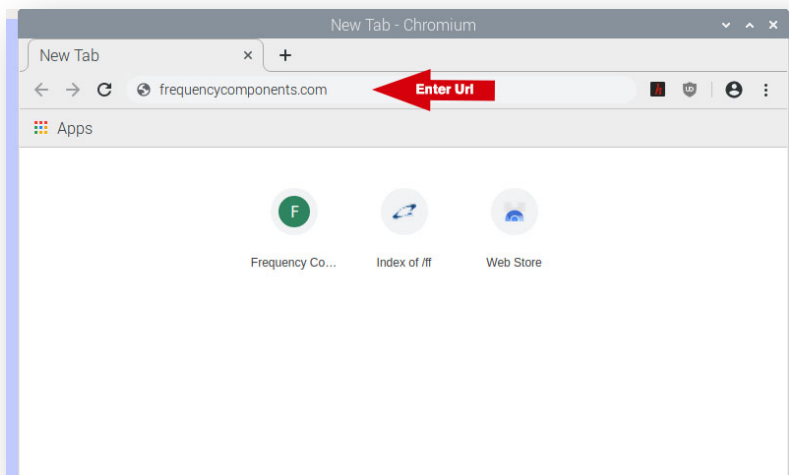
## Loading a Frequency Program into Your Machine From Your Researcher's Account

**Overview:** There are no programs included with your FC-5 Machine; you will need to create programs in your Researcher's Account to download to your Machine.

### Open Your Researcher Account

- It is easier if you connect the mouse and keyboard to the Machine.
- Open the computer's Home Screen.
- Open the Web Browser.
- Go to [frequencycomponents.com](http://frequencycomponents.com) and log into your Researcher account.

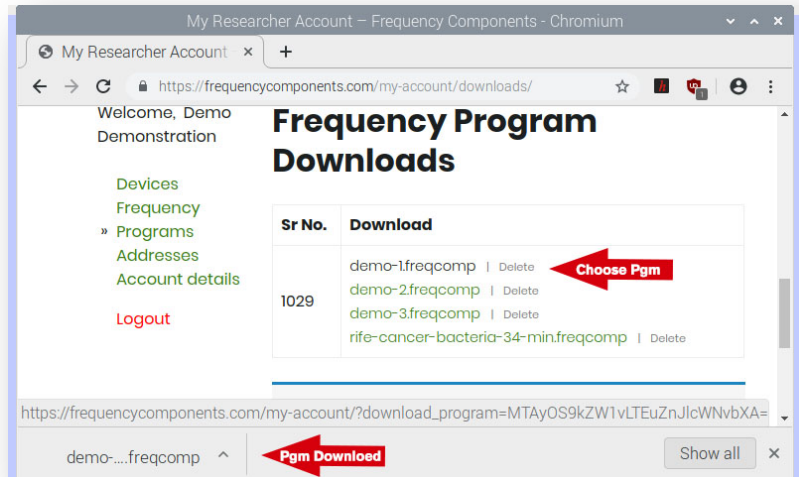
(Figure 5)



## Identify & Download The Program

- In your Researcher's Account, open the Frequency Programs page.
- Double click on the desired program. It will appear as a download on the bottom left of the screen.
- Close the browser.
- Open the Frequency Components APP, the new program will display in the Programs drop down list.

(Figure 6)



## Your Frequency Components App

### Frequency Component App

- If you are in the Home screen, touch the Frequency Components APP button to open the program.
- Touch the Run, Pause, or Stop buttons to control the Current Program displayed.
- Touch the Programs button to display the list of available Frequency Programs.
- Touch the Exit button to Exit the program and turn off the Machine.

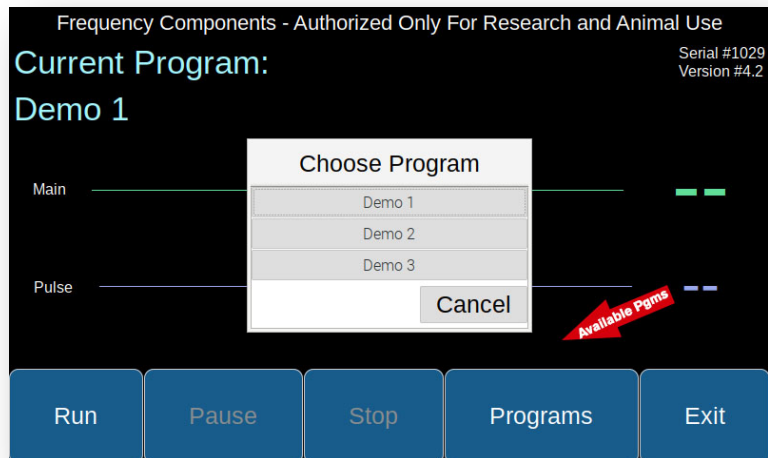
(Figure 7)



### Choosing a Frequency Program

- Touch the Program button to display the list of available Frequency Programs.
- Touch the desired Program to make it active.
- Press the Run, Pause, or Stop buttons to operate the Machine.

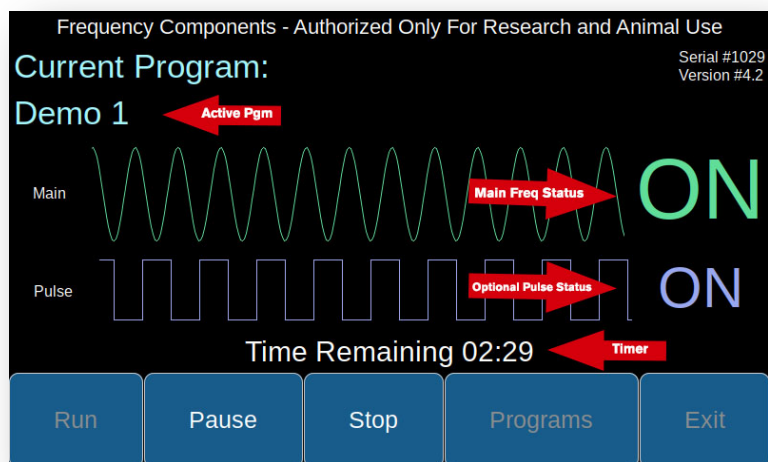
(Figure 8)



### Running Programs

- Press Run to start the active Frequency Program.
- Note the status of the Main Frequency in the Program
- Note the status of the optional Pulse Frequency. If the Program does not have a Pulse Frequency associated with the segment, then this will be off.
- Pause stops the Program. Pressing Resume starts the Program where it was paused.
- Stop ends the program. Pressing Run will restart the Program at the beginning.

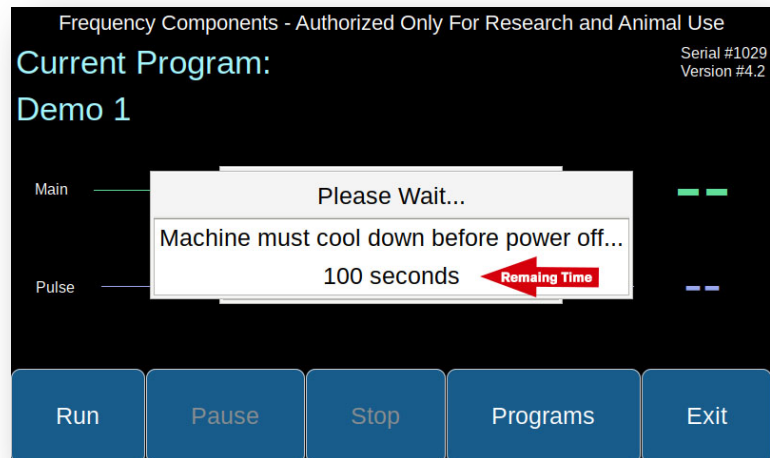
(Figure 9)



### Exiting The APP

- Press the Exit button to end the session.
- Fans will continue to run to insure all electrical components have completely cooled. The window will show the time remaining.
- If the mouse and keyboard are not attached, the system will close down. Pressing the Unit Power button will restart the system.
- If the mouse and keyboard are attached, the Home screen will open. Remove the mouse and keyboard, touch the Frequency Components APP then the Exit button to close down the Machine.

(Figure 10)

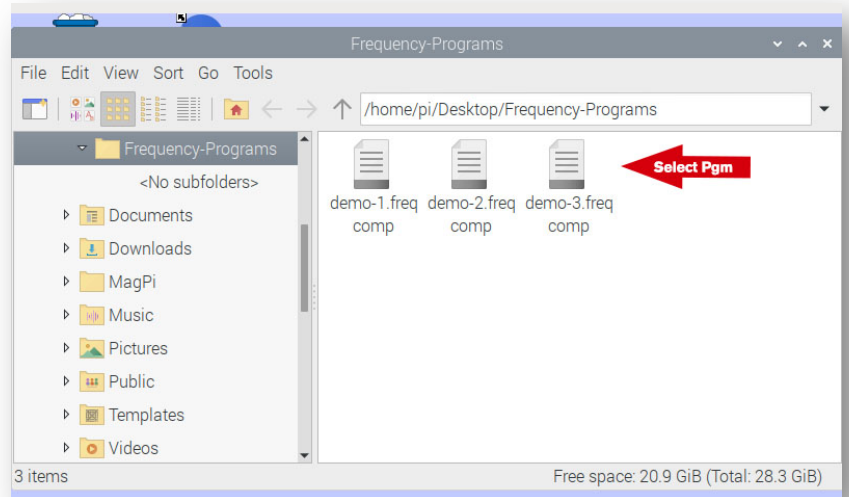


## Removing a Frequency Program From the Machine

### Open Frequency Programs Folder

- Connect the mouse and keyboard to the Machine.
- Open the computer's Home screen.
- Click on the Frequency Programs icon.
- Right click on the program to be deleted.
- Click on "Move to trash"
- Answer "Yes" to the dialogue.
- The deleted program remains in the Trash folder if you want to reinstall it into the Frequency Programs folder.

(Figure 11)



## Calibrating The Touchscreen

Occasionally the touchscreen will become uncalibrated. This is evident when you notice that touching the buttons in their center no longer activates the program. This is easily rectified with the Calibrate Touchscreen program found on the computer's Home screen.

### Calibrating Touch Screen

- Connect the mouse to the Machine.
- Open the Home Page.
- Click on the Calibrate Touchscreen Icon.
- Place the mouse in the center of one of the circles in a corner and right click.
- Do the same for the other three corners.
- Click the Save and Exit button. The Touchscreen will be back in calibration.

(Figure 12)

